



49 Kortright Rd E, Guelph, ON

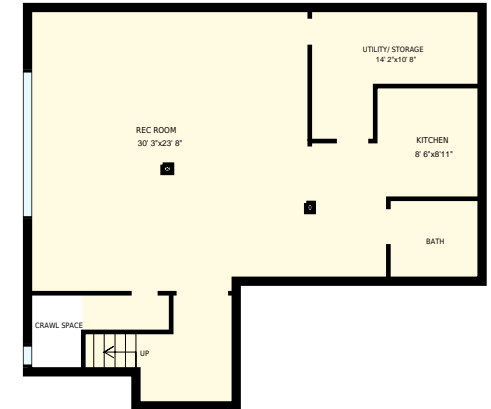
Total Exterior Area Above Grade 2506 sq. ft.



Main Floor
Exterior Area 1241 sq. ft.



2nd Floor
Exterior Area 1265 sq. ft.



Basement

All room dimensions and floor areas must be considered approximate and are subject to independent verification. For method of measurement please see <https://youriguide.com/measure/>.

PREPARED FOR: Angela Crawford
Sales Representative
Coldwell Banker Neumann REB Ltd.



49 Kortright Rd E, Guelph, ON

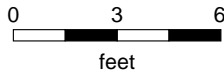
PREPARED FOR:
 Angela Crawford
 Sales Representative
 Coldwell Banker Neumann REB Ltd.

Main Floor

Interior Area 1129 sq. ft.
 Exterior Area 1241 sq. ft. Included Area

PREPARED ON:
 Jun, 2017

All room dimensions and floor areas must be considered approximate and are subject to independent verification.
 For method of measurement please see <https://youriguide.com/measure/>.



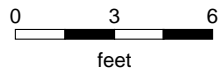
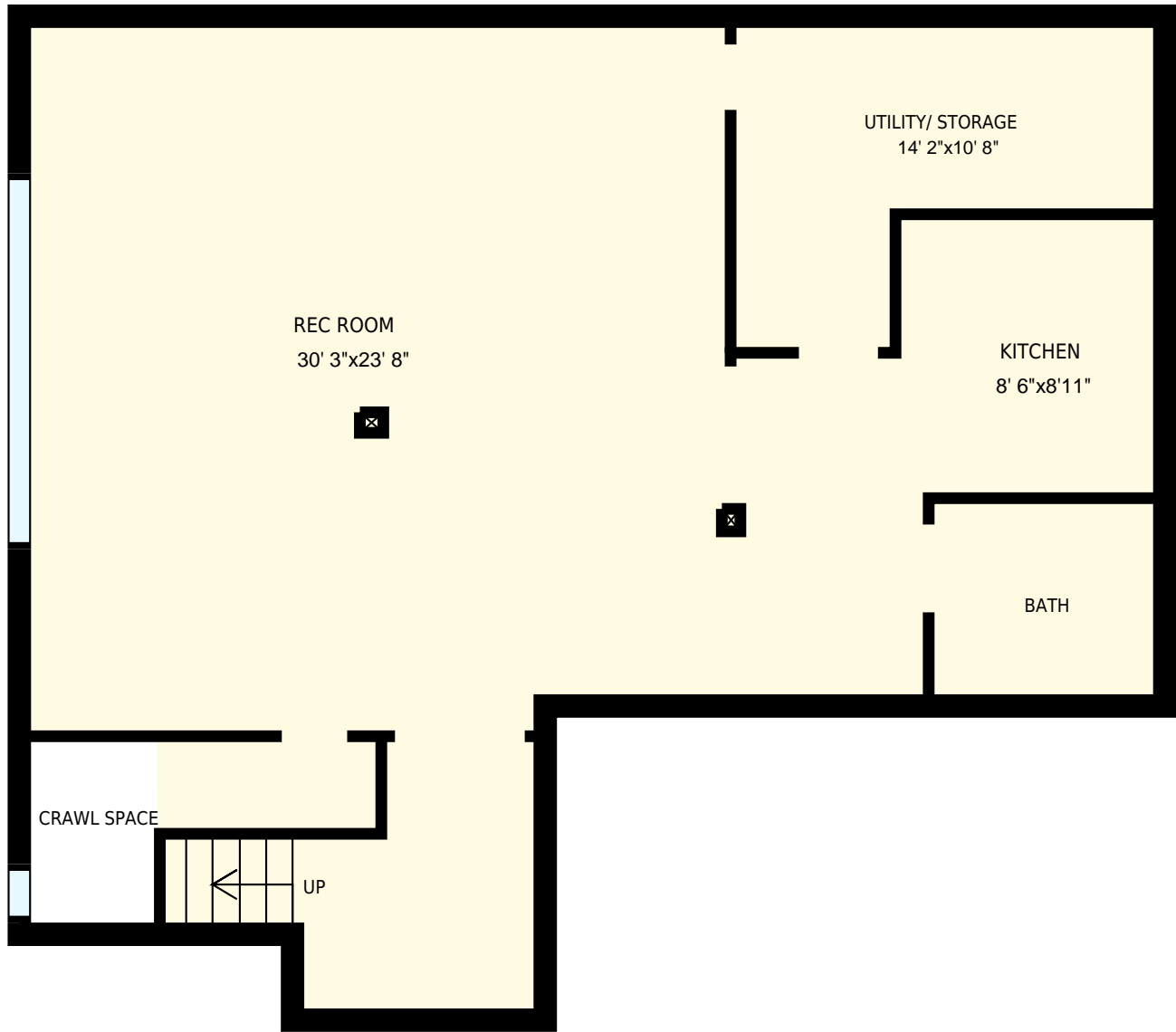
49 Kortright Rd E, Guelph, ON
2nd Floor

PREPARED FOR:
Angela Crawford
Sales Representative
Coldwell Banker Neumann REB Ltd.

Interior Area 1152 sq. ft.
Exterior Area 1265 sq. ft. Included Area

PREPARED ON:
Jun, 2017

All room dimensions and floor areas must be considered approximate and are subject to independent verification.
For method of measurement please see <https://youriguide.com/measure/>.

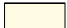


49 Kortright Rd E, Guelph, ON

PREPARED FOR:
 Angela Crawford
 Sales Representative
 Coldwell Banker Neumann REB Ltd.

Basement

Interior Area 1008 sq. ft.
 Exterior Area

 Included Area

PREPARED ON:
 Jun, 2017

All room dimensions and floor areas must be considered approximate and are subject to independent verification.
 For method of measurement please see <https://youriguide.com/measure/>.